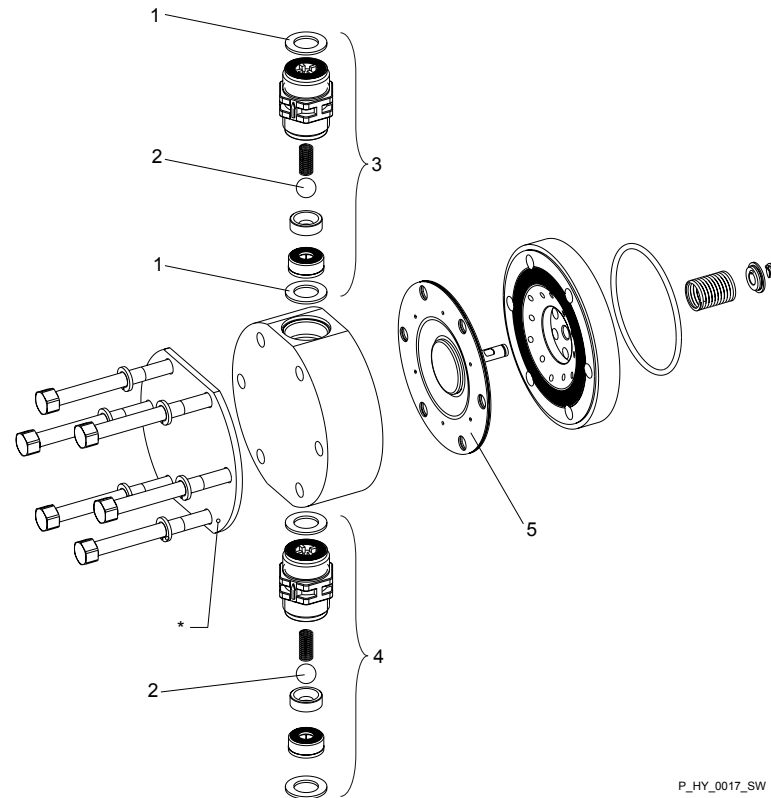


# 1 Ordering Information

## 1.1 Exploded view of the drawing



P\_HY\_0017\_SW

Fig. 1: Exploded view of Hydro liquid end Numbered positions = PVT set of spare parts - range for supply. Technical changes reserved.

- |   |                            |   |                                 |
|---|----------------------------|---|---------------------------------|
| 1 | Seals (Set)                | 4 | Suction connection assy.        |
| 2 | Valve balls                | 5 | Metering diaphragm              |
| 3 | Discharge connection assy. | * | Reinforce plate - only with PVT |

## 1.2 Spare Parts kits

The spare part sets include the replacement parts for the liquid ends.

Standard delivery for material version PVT

- 1 - Metering diaphragm
- 1 - Suction connection assy.
- 1 - Discharge connection assy.
- 2 - Valve balls
- 1 - Seal set, compl.

Standard delivery for material version SST

- 1 - Metering diaphragm
- 2 - Valve balls
- 1 - Seal set, compl.

---

**Ordering Information**


---

**Spare parts sets Hydro/ 2**

for types: 100010, 100009, 100007, 100006, 100003,  
064025, 064022, 064018, 064015, 064007:

for liquid end	Material version	Part no.
FMH 25 - DN 10	PVT	1005548
FMH 25 - DN 10	SST	1005549
FMH 25 - DN 10	SST (without valve assys.)	1005550
FMH 25 - DN 10	SST (for double ball valve	1005551

.  
for types: 025068, 025060, 025048, 025040, 025019:

for liquid end	Material version	Part no.
FMH 60 - DN 10	PVT	1005552
FMH 60 - DN 10	SST	1005553
FMH 60 - DN 10	SST (without valve assys.)	1005554
FMH 60 - DN 10	SST (for double ball valve	1005555

**Spare parts sets Hydro/ 3**

for types: 100035, 100031, 100025, 100021, 100010,  
064068, 064060, 064048, 064040, 064019:

for liquid end	Material version	Part no.
FMH 60 - DN 10	PVT	1005552
FMH 60 - DN 10	SST	1005553
FMH 60 - DN 10	SST (without valve assys.)	1005554
FMH 60 - DN 10	SST (for double ball valve	1005555

.  
for types: 025170, 025150, 025120, 025100, 025048:

for liquid end	Material version	Part no.
FMH 150 - DN 15	PVT	1005556
FMH 150 - DN 15	SST	1005557
FMH 150 - DN 15	SST (without valve assys.)	1005558

## Spare parts sets Hydro/ 4

for types: 250130, 250190, 250250, 250350, 250400:

for liquid end	Material version	Part no.
FMH 400 - DN 25	PVT with valve	1023057
	SST without valve	1040812
	SST with valve	1040813
	HCT without valve	1040860
	HCT with valve	1022716

for types: 160210, 160300, 160400, 160550, 160625:

for liquid end	Material version	Part no.
FMH 625 - DN 32	PVT with valve	1040863
	SST without valve	1040824
	SST with valve	1040825
	HCT without valve	1040861
	HCT with valve	1040862

for types: 100330, 100480, 100635, 100880, 101000:

for liquid end	Material version	Part no.
FMH 1000 - DN 32	PVT with valve	1040866
	SST without valve	1040826
	SST with valve	1040827
	HCT without valve	1040864
	HCT with valve	1040865

for types: 0704650, 070670, 070890, 071230, 071400:

for liquid end	Material version	Part no.
FMH 1400 - DN 40	PVT with valve	1040869
	SST without valve	1040828
	SST with valve	1040829
	HCT without valve	1040867
	HCT with valve	1040868

### 1.3 Metering diaphragms

#### Metering diaphragm PTFE

for liquid end	Pump type	Part no.
FMH 25	064025, 064022, 064018, 064015, 064007, 100010, 100009, 100007, 100006, 100003	1005545
FMH 60	025068, 025060, 025048, 025040, 025019, 064068, 064060, 064048, 064040, 064019, 100035, 100031, 100025, 100021, 100010	1005546
FMH 150	025170, 025150, 025120, 025100, 025048	1005547

#### Metering diaphragm PTFE / Hast. C, coated with PTFE

for liquid end	Pump type	Part no.
FMH 25	064025, 064022, 064018, 064015, 064007	1006481
FMH 60	025068, 025060, 025048, 025040, 025019, 064068, 064060, 064048, 064040, 064019	1006482
FMH 150	025170, 025150, 025120, 025100, 025048	1006483

#### Metering diaphragm PTFE / 1.4404

for liquid end	Pump type	Part no.
FMH 400	250130, 250190, 250250, 250350, 250400	1040808
FMH 625	160210, 160300, 160400, 160550, 160625	1040809
FMH 1000	100330, 100480, 100635, 100880, 101000	1040810
FMH 1400	0704650, 070670, 070890, 071230, 071400	1040811

#### Metering diaphragm PTFE / Hast. C, coated with PTFE

for liquid end	Pump type	Part no.
FMH 400	250130, 250190, 250250, 250350, 250400	1040874
FMH 625	160210, 160300, 160400, 160550, 160625	1040875
FMH 1000	100330, 100480, 100635, 100880, 101000	1040876
FMH 1400	0704650, 070670, 070890, 071230, 071400	1040877

### 1.4 Pressure relief valve (HP4 only)

Opening pressure $P_N$	Part no.
7 bar	1039667
10 bar	1039667

Opening pressure P <sub>N</sub>	Part no.
16 bar	1039668
25 bar	1039668

## 1.5 General

### Hydraulic oil

The pump uses an hydraulic oil that lubricates the gear at the same time.

Use	Manufacturer	Name	Viscosity class	Part no.
Standard	Mobil	Mobilube 1 *	75W - 90	100 58 23
Food safe	Mobil	SHC Cibus *	220	1007610

\* or comparative hydraulic oil

### Seal

Spare part	Part no.
Seal for the oil drainage stopper	1004803

### Reinforce plate

Diameter in mm	Part no.
108	1004068
128	1004069
400	1040853
625	1040855
1000	1040857
1400	1040859

## 1.6 Accessories

No.	Accessories	Part no.
1	Socket Hydro HP2 for add-on power end	1005660
2	Socket Hydro HP3 for add-on power end	1005661