



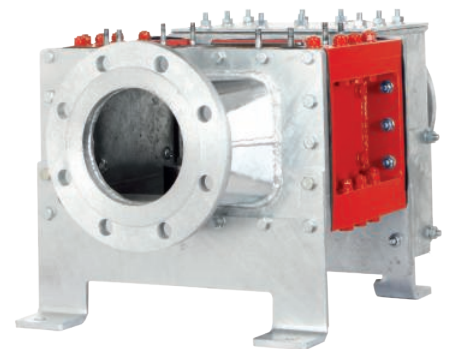
**VOGELSANG**  
ENGINEERED TO WORK



TWIN SHAFT GRINDING FOR TOUGH APPLICATIONS

## XRipper™ XRP

Your Low-Maintenance,  
Drop-In Alternative to Common  
Inline, Twin-Shaft Grinders



Industry



Fisheries



Biogas



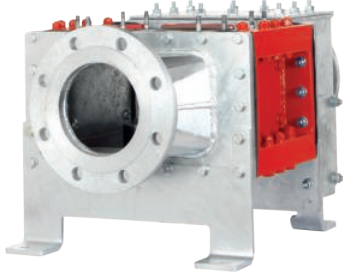
Agriculture



Wastewater

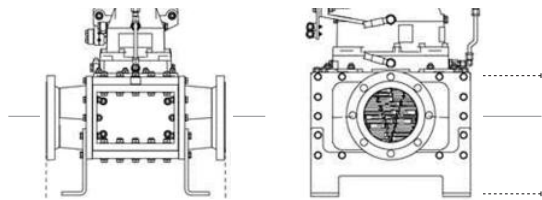


**XRipper used as replacement**



**XRipper™ is designed to be a drop-in replacement for many common grinders in the market.**

Designed to Fit  
Common Flange sizes,  
Centerlines &  
Flange-to-Flange  
Measurements



**TWIN SHAFTED GRINDING FOR INLINE APPLICATIONS**

**Vogelsang XRipper™ XRP Models**

XRP-Q(D)	Flange size	Flange to Flange	Flow*
	Ø inch (mm)	inch (mm)	gpm (m³/h)
XRP100-90Q	4" (100)	16" (406)	375 (85)
XRP136-140Q	4" (100)	16" (406)	725 (165)
	6" (150)	19" (483)	830 (190)
XRP136-200Q	4" (100)	19.25" (488)	1170 (265)
	6" (150)	21.25" (540)	1230 (280)
	8" (200)	23.25" (590)	1320 (300)
XRP186-260Q	10" (250)	27.25" (692)	2150 (490)
	12" (300)	31.25" (794)	2420 (550)
XRP186-520QD	12" (300)	35.25" (895)	4315 (980)
	16" (400)	43.25" (1099)	4670 (1060)
	18" (450)	47.25" (1200)	5020 (1140)

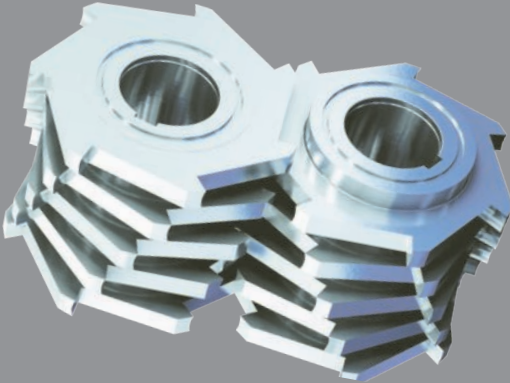
\*Based on water and a max. pressure loss of 2.18psi (0.15bar). Testing conducted at Vogelsang's testing facility. Contact Vogelsang for other testing documentation.

**Vogelsang XRipper™ XRP / JWC™ Grinders\***

Vogelsang	Flange size	JWC™(E)
XRP100-90Q	4"	10000-0804-DI
XRP136-140Q	6"	10000-0806-DI
XRP136-200Q	4"	30001-1204 30004T-1204
	6"	30001-1206 30004T-1206
XRP136-200Q	8"	30001-1208 30004T-1208
XRP186-260Q	10"	30001-2410 30004T-2410
XRP186-260Q	12"	30001-2412 30004T-2412
XRP186-520QD	12"	40002-1812
	12"	40002-2412
	16"	40002-2416
	18"	40002-2418

\*JWC™ is a trademark of JWC Environmental, Inc. Costa Mesa, CA, USA. Vogelsang is not affiliated with JWC Environmental in any way. Dimensions of the JWC Environmental, Inc. grinder are from the JWC Environmental, Inc. publication *Muffin Monster Family Brochure*, 2016.

XRipper™ XRP is not your average twin shaft grinder!



What sets the XRipper™ grinder apart from other twin shaft grinders is its unique cutting elements. Traditional twin shaft grinder cutters are stacked up along the shaft, by the factory, using smaller individual blades and spacers to make the entire cutting assembly. The main disadvantage is that the gaps along the sides of the blades enlarge over time due to wear on the cutters and spacers. The enlarged gaps allow movement of the cutting blades and ultimately overall failure or poor cutting performance. The Vogelsang XRipper cutter is CNC cut out of a single block of steel to the required shape and size. This advantage reduces maintenance, and gives longer overall life to the cutting materials.

▶ If you're looking for a **high-performance, low-maintenance alternative** to typical twin shaft grinders, XRipper is your answer. The XRipper is generally placed either in front of pumps or in areas where solids need to be cut down to size to prevent plugging. Solids are cut down to size to make solids easier to dispose, transport or process in downstream equipment.

TWIN SHAFTED GRINDING FOR INLINE APPLICATIONS

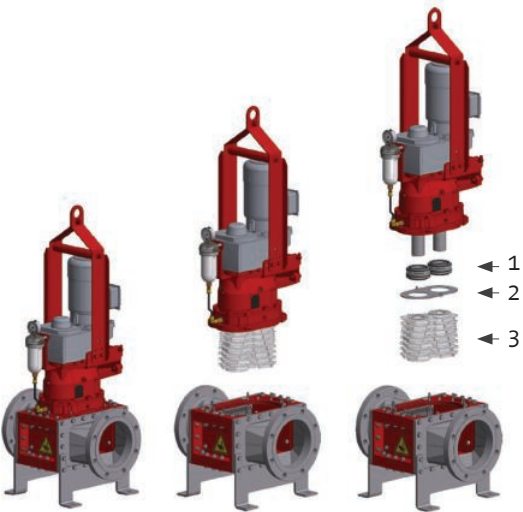
Easy Inline Maintenance

By comparison to a traditional twin shaft grinder, the XRipper grinder is easy to maintain. Everything can be done inline without removing any connected piping. Simply remove a few retaining hex nuts and the unit can be lifted vertically while the flanges and housing remain connected to the piping. The XRipper's ripper blades are both removed at the same time and come off in solid sections versus individual pieces like ordinary twin shaft grinders. Typical routine service such as changing ripper blades takes only a fraction of the time required to service a typical twin shaft grinder. In addition there are no cartridge style parts that require factory refurbishment.

Quality Construction & Control

The cutting elements are precision machined as a single piece of steel. They are made from specially processed steel that is formulated to be ductile inside with an incredibly hard outer surface. This creates a cutting element that is highly resistant to impact abrasion while retaining sharp edges for superior cutting performance.

The XRP 136 & XRP 186 allow for optional blade widths which generate different cuts. Finer blade widths result in a more reduced solid or a finer cut size can be achieved by rotation and the use of a higher RPM.



- 1 Cartridge Sealing
- 2 Wear plate with counter blades
- 3 Ripper Rotors

Standard, 2-year warranty including wear parts and labor

### Our Company:

Innovation and progress have been hallmarks of Vogelsang for over 80 years and have made us a leading designer and manufacturer of pumping, solids handling and process products. Time and time again we have achieved significant milestones of innovation and product development. Today, we manufacture some of the most innovative and reliable products for municipalities, industry and agriculture.

Our products are proudly made and assembled in Ravenna, Ohio, USA.

### Our Product Range:

We offer solutions for the following areas:

- Industry & Processing
- Wastewater treatment
- Biogas
- Railway wastewater disposal
- Agriculture

### We Offer a Broad Range of Products:

- Rotary lobe pumps
- Grinding technology
- Distributors
- Spreading technology
- Supply and disposal systems
- Complete solutions

We also offer customized solutions for your specialized applications.

### How to Reach Us:

Vogelsang is present worldwide. Visit us online for more information about our company and wide range of services:

#### Vogelsang

7966 State Route 44

P.O. Box 751

Ravenna, Ohio 44266, USA

Toll Free: 800.984.9400

Tel: 330.296.3820

Fax: 330.296.4113

www.vogelsangusa.com

sales@vogelsangusa.com



[vogelsangusa.com](http://vogelsangusa.com)



#### HiFlo® VXQ Series Rotary Lobe Pumps

Designed to handle viscous liquids and tough solids.



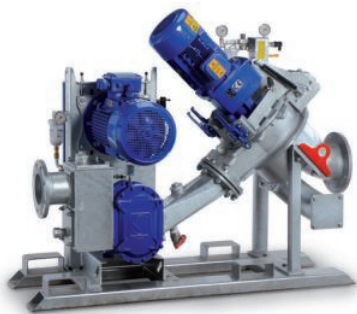
#### XRipper™ XRS

High-performance, low-maintenance alternative to typical twin shaft inline grinders.



#### XRipper XRC™, Channel or Wall Mount

Efficient shredding of coarse matter in wastewater channel applications.



#### BioCut®

Pump & RotaCut® combines the power of both products into one compact unit.



#### RotaCut® RCX48 & RCX58

Inline macerator offers higher pressure, lower head loss and maximum solids reduction.



#### XRipper XRG™, High-Flow Channels

Efficient shredding of coarse matter in wastewater channel applications.